

For fishing regulation information, please refer to the NHFGD Freshwater Fishing Digest.

Contact: NHFGD Region 1 (North Country), Lancaster
E-mail: reg1@wildlife.nh.gov Phone: 603-788-3164

SECOND CONNECTICUT LAKE Pittsburg

FISHERY: Coldwater **ACRES:** 1,102

TROPIC LEVEL:

AVG. DEPTH: 20 **MAX. DEPTH:** 63


SPECIES: EBT,LLS,LT


ADDITIONAL INFO: lake trout and/or salmon lake

ACCESS: concrete ramp, gravel parking

Please contact NH Dept of Safety, Marine Patrol for info. on water body/boat/motor restrictions: (603) 293-2037 www.nhmarinepatrol.com

Public Water Access site


 Canoe/cartop


 Shorebank

 Ramp

 Bathymetric contour (feet)


Bathymetry provided by the NH Department of Environmental Services, Watershed Mgt Bureau

 Town boundary

 Primary Route

 Road or Street

 Trail or other

 Stream or Shoreline

 Surface Water

 Wetland


 Conservation or Public land

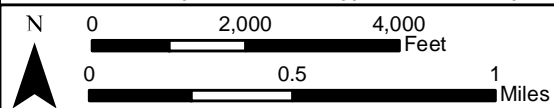
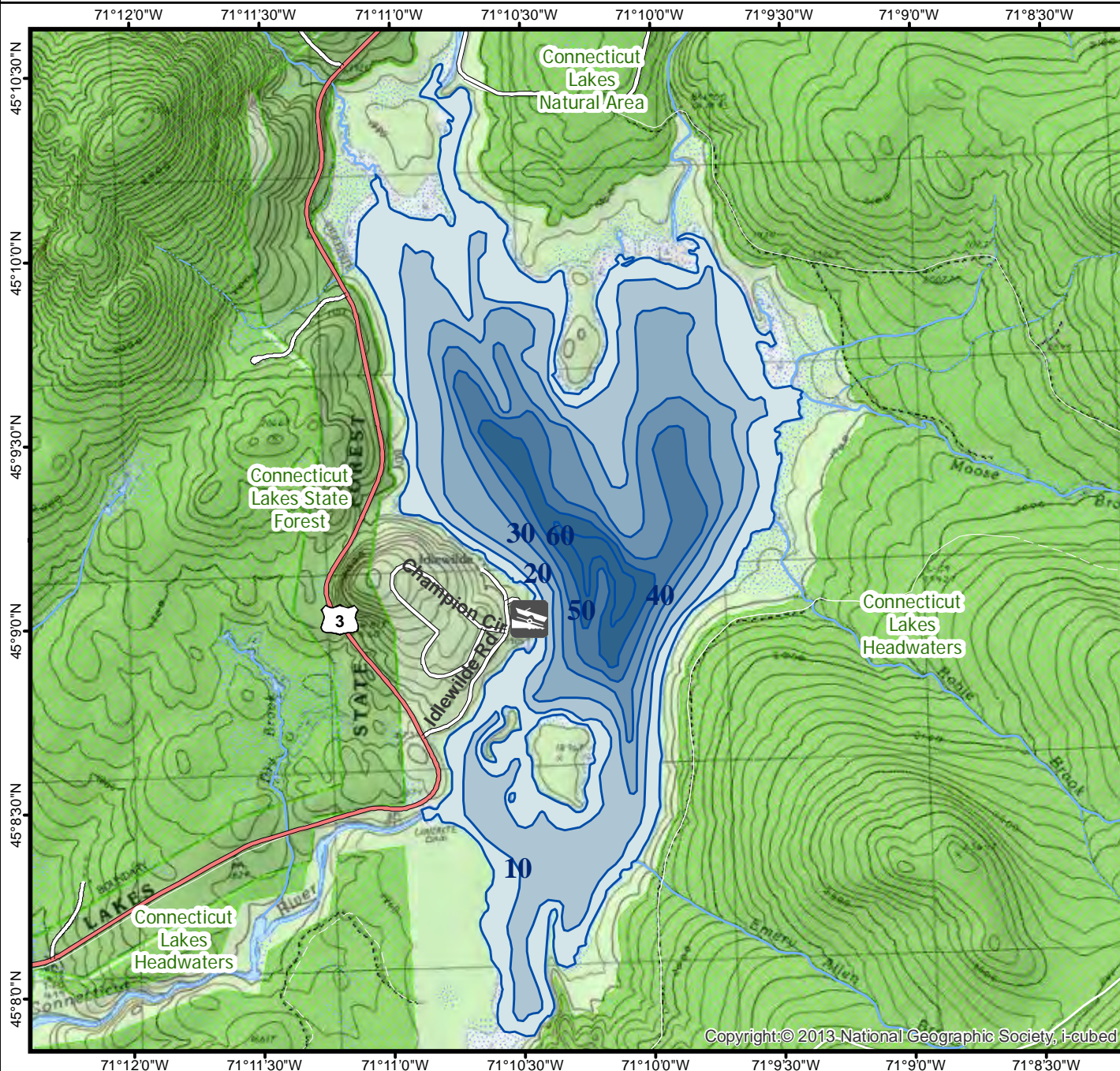
 Cleared Forest

 Contour

 Building

Source: USGS

 Restricted Access Conservation



Most data presented on this map represent stock data sets obtained from NH GRANIT, Complex Systems Research Center, UNH. CSRC, NHOEP, NHFGD and the cooperating agencies make no claim as to the validity or reliability or to any implied uses of these data. NOT FOR NAVIGATION.

Directions: off Rt 3